



GEMENG  
**BECH**

**2026**

**PHOTOGRAPHY EXHIBITION**  
**📍 BECH IN THE TUNNEL**

**12.06.2026 - 12.09.2026**

Outdoor photo exhibition

---

## **Some ideas simply ask to be brought to life**

**A photographic exhibition celebrating the most beautiful places in our region was one of them. In the Culture and Tourism Commission of Bech we had carried it with us for a while, quietly, as a possibility. When LEADER Möllerdall put out its call to bring art and culture into public space, everything fell into place. The thought became a plan, and the plan became a gift to the community.**

**With the help of the Müllerthal communes, we invited the region's photographers to show us their Müllerthal, and the response was generous: fourteen answered the call. More than a hundred pictures came in, each lovelier than the last, every one of them speaking of a love for this region. Choosing was hard. In the end, a single image from each: fourteen pictures by fourteen people who call this place home. Landscapes, animals, familiar places in a light you will not have seen before. However different the signatures, one thing unites them: a patient eye, and a feel for the right moment.**

**The pictures are shown in the open air, in the tunnel of the Becher Gare, a place that breathes a history of its own. But the exhibition does not stay in Bech. As a travelling show it moves on through the communes of the Müllerthal that open their doors to it, true to the spirit of LEADER: that as many people as possible should share in it.**

---

---

A project like this succeeds only together, and there is more work in it than the finished pictures reveal. Our thanks go to the members of the commission, who over many hours and countless meetings, all of it voluntary and wholehearted, turned an idea into something real. We thank LEADER Möllerdall, the commune of Bech and the Ministry, who stood behind our project from the very start. And above all we thank the fourteen photographers, who entrusted us with their pictures and, in doing so, with a piece of how they see it. We hope you take as much pleasure in looking at them as we did in bringing them together.

**Bibi Wintersdorf**

Alderwoman of the commune of Bech and member of the Culture and Tourism Commission

**Laurent Seil**

President of the Culture and Tourism Commission

**Viviane Bohnenberger, Laurence Closener**

Members of the Culture and Tourism Commission

With thanks to **Marc Pitzen and Norbert Eicher** of **KonschtBecher** for their support

---



---

# Welcome Message

The Müllerthal region captivates visitors with its unique landscape and charming villages. This exhibition invites you to discover our region from new perspectives. At the same time, it shines a spotlight on local talent: Fourteen creative photographers have been given the opportunity to present their work to a wide audience.

I am particularly pleased that this initiative could be implemented as a LEADER mini-project. Mini-projects make it possible to provide financial support quickly and easily for initiatives that directly enrich community life in our villages. They demonstrate that even with modest resources, a great deal can be achieved: they promote local ideas, support community engagement, and bring people together.

My heartfelt thanks go to everyone involved: the Culture and Tourism Commission of the Municipality of Bech for their dedication, the Konschtbecher Association and the partner municipalities for their support, and especially the photographers who are sharing their personal perspective on the region with us.

I hope you enjoy (re)discovering our region!

**Charel Heim**

President LEADER Mëllerdall

---

# STEVE ARNOLDY



Steve Arnoldy, from Beaufort, has photographed as a hobbyist since 2022, drawn since childhood to the natural world. He works mainly in nature, wildlife, landscape and portrait photography. (Portrait: Miq Dhur)

Contact: [focuspocus@gmail.com](mailto:focuspocus@gmail.com)

Instagram: [focus\\_pocus\\_luxembourg](https://www.instagram.com/focus_pocus_luxembourg)

Facebook: [Steve Arnoldy Photographie](https://www.facebook.com/SteveArnoldyPhotographie)

---

## EXHIBITED PHOTOGRAPH : FOREST LIGHT





# ROMAIN BRUCHER



Romain Brucher lives in Beaufort and devotes himself to wildlife, nature and landscape photography. What counts for him is not the perfectly staged picture but the unposed moment. Patience and an understanding of animal behaviour matter more to him than a spectacular subject, for the protection of habitat and nature comes, in his eyes, before any photograph. Only then can the landscapes and animals of the Geopark Mëllerdall be experienced in all their beauty.

Contact: [rbrucher@pt.lu](mailto:rbrucher@pt.lu)

Facebook: Romain Brucher

---

## EXHIBITED PHOTOGRAPH : BERDORF





# RAYMOND CLEMENT



Raymond Clement, born in 1944, is one of Luxembourg's most important art photographers. He has worked internationally for more than five decades, with exhibitions across Europe, the United States and China. His reputation grew from 1975 with 'Family of Jazz', a series of portraits of great jazz musicians that continues to be shown around the world. From the early eighties he turned to nature photography and has been at work in Luxembourg's nature parks ever since, in the Öewersauer, along the Our and in the Mëllerdall. His long-term project 'Nature's Luxembourg' is regarded as one of the most significant photographic records of the Luxembourg landscape. For this exhibition he returns to a place he has followed for decades.

---

## EXHIBITED PHOTOGRAPH : 'BILDCHEN' IN HERSBERG, COMMUNE OF BECH





# MARCO DETAIL



Marco Detail photographs above all animals and nature. Hours of waiting are part of the work, until a deer steps out of the wood or a bird shows itself just so. In landscape work it comes down to the right light, and to the frame he chooses. An image must express something, and the real challenge is to let the viewer feel what the photographer saw, or sensed, at the moment of release.

Contact: [artphoto.marco@pt.lu](mailto:artphoto.marco@pt.lu)  
Facebook: Marco Detail

---

## EXHIBITED PHOTOGRAPH : BEAUFORT CASTLE





# OLIVIER GLOD



Olivier Glod, known as 'OliGlod Photography', is a photographer and drone pilot from the commune of Waldbillig. Alongside weddings, events and property, his heart lies in authentic, atmospheric images of the Müllerthal. With his drone he shows familiar places from an unfamiliar angle, bringing the bond between nature, landscape and people to the fore.

Contact: [www.oliglod.com](http://www.oliglod.com)

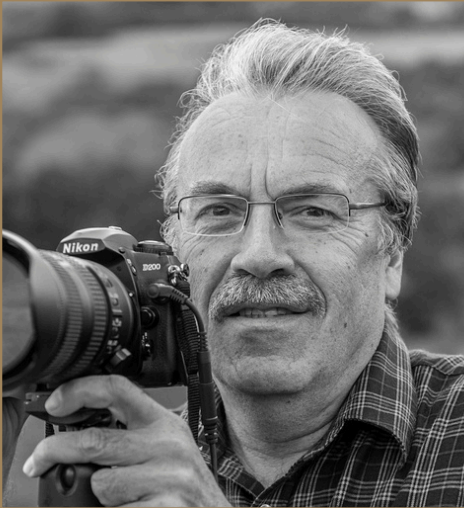
---

## EXHIBITED PHOTOGRAPH : SUNSET IN WALDBILLIG





# PIERRE HAAS



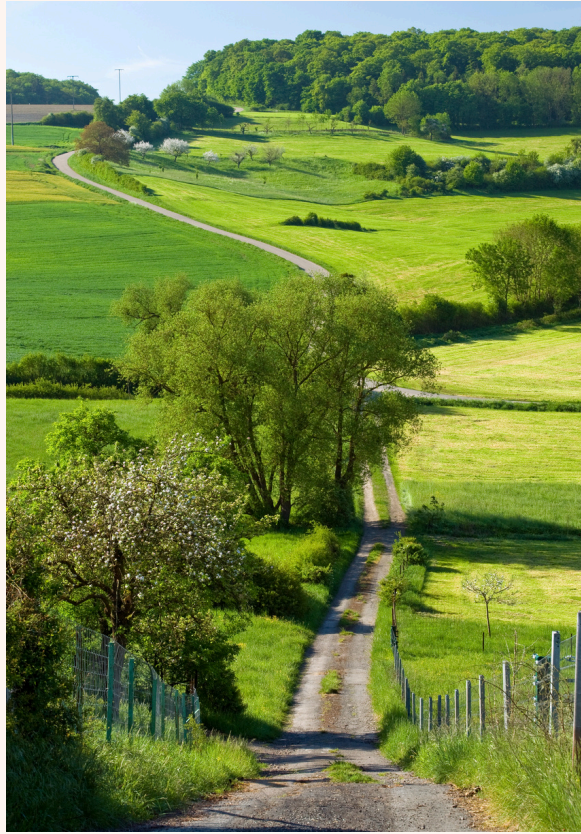
Pierre Haas is self-taught and has been bound to photography for more than fifty years. His preferred subject is nature, above all the landscapes of his homeland. Since 2003 he has followed the Luxembourg nature parks Our, Öewersauer and Müllerthal with his camera. His work has earned him the international AFIAP and EFIAP distinctions of the Fédération Internationale de l'Art Photographique. In 2011 he published the photographic book 'D'Gemeng Réiden/Atert'. That he has known the Müllerthal for decades is plain to see in his pictures.

Contact: via the Culture and Tourism Commission of Bech

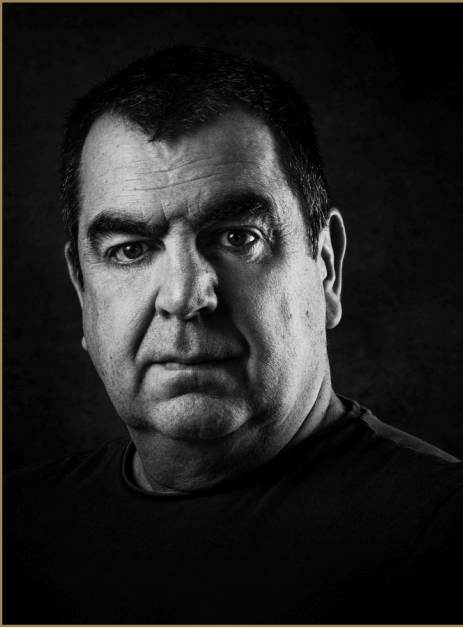
---

## EXHIBITED PHOTOGRAPH : GIISCHTERKLAUS, PËTZBIERG





# CHRISTIAN KIEFFER



Pierre Haas is self-taught and has been bound to photography for more than fifty years. His preferred subject is nature, above all the landscapes of his homeland. Since 2003 he has followed the Luxembourg nature parks Our, Öewersauer and Müllerthal with his camera. His work has earned him the international AFIAP and EFIAP distinctions of the Fédération Internationale de l'Art Photographique. In 2011 he published the photographic book 'D'Gemeng Réiden/Atert'. That he has known the Müllerthal for decades is plain to see in his pictures.

Contact: [www.christiankieffer.com](http://www.christiankieffer.com)

---

## PHOTOGRAPHIE EXPOSÉE : SCHWARZE ERNZ





# ROB KIEFFER



Rob Kieffer, born in 1957, lives in Bech as a journalist and author. He writes and photographs mainly travel and cultural features, published in the Frankfurter Allgemeine Zeitung, Die Zeit, Die Welt, Süddeutsche Zeitung, Neue Zürcher Zeitung, mare, Geo Saison and abenteuer & reisen, among others. His photographic exhibition 'Luxemburg im Heißluftballon' has travelled the world. His most recent book, '80 Erlebnisorte. Region Müllerthal', appeared with Éditions Ernster.

Contact: via the Culture and Tourism Commission of Bech

---

## EXHIBITED PHOTOGRAPH : TUNNEL BECHER GARE





# ANNE LOMMEL



Anne Lommel comes from Cruchten in the commune of Nommern and found her way to photography through advertising, with studies at the Miami Ad School Hamburg and placements at international agencies in London, Paris and San Francisco. She has worked freelance since 2017, specialising in food, landscape and travel photography as well as events. Her work has appeared in cookery books, magazines and exhibitions, and she photographs regularly for tourism and regional organisations.

Contact: [www.annelommel.com](http://www.annelommel.com)

---

## EXHIBITED PHOTOGRAPH : BALLOON OVER NOMMERN





# TOM LUCAS



Tom Lucas, born in 1977, lives in Angelsberg and works as a photographer for a museum. He learned his craft in Liège, studying photography and web design. His contribution shows the 'Lock' near Nommern, also known as the 'Champignon': a prehistoric site where a beautiful heathland has formed, crossed once a year by a travelling shepherd and his flock.

Contact: [www.angsber.com](http://www.angsber.com)

---

## EXHIBITED PHOTOGRAPH : CHAMPIGNON, NOMMERN-LOCK





# OLIVIER MOLITOR



Olivier Molitor is a forester in the communes of Fischbach and Larochette. Nature photography is one of his passions, as are hunting and driving his classic car, an MG. For the exhibition he shows a kingfisher.

Contact: via the Culture and Tourism Commission of Bech

---

## EXHIBITED PHOTOGRAPH : KINGFISHER, FISCHBACH





# Jos NERANCIC



Jos Nerancic lives in Beaufort and has been involved with photography for more than three decades, professionally and privately. What began as glances over the shoulders of other photographers became a craft of his own. The digital age widened his possibilities, and through workshops, seminars and photographic trips he keeps developing his work. There is no fixed theme; his subjects change like a good menu: concerts, nature, skies, sport. His exhibited picture is the aurora borealis over Beaufort, captured on the night of 11 May 2024.

Contact: [www.josip.lu](http://www.josip.lu) | [josip@josip.lu](mailto:josip@josip.lu)

---

## EXHIBITED PHOTOGRAPH : NORTHERN LIGHTS OVER BEAUFORT





# FERNAND SCHMITZ



Fernand Schmitz, born in Ettelbrück in 1971, lives with his family in Berdorf. He works for the CFL; photography is the hobby he has thrown himself into since 2016. His path led him by way of Echternach and Beidweiler to Berdorf. Sport photography is at the heart of his work, and alongside it he enjoys landscapes and, now and then, portraits.

Contact: via the Culture and Tourism Commission of Bech

---

## EXHIBITED PHOTOGRAPH : ROCKELSBONGERT, BERDORF





# RENÉ SPAUTZ



René Spautz, born in 1955 in Larochette and living in Angelsberg, is a friend of nature and a wildlife photographer by conviction. He knows his patch precisely, and he respects it. A picture at any price is out of the question for him: he does not disturb, does not camouflage himself, does not lie in wait. Instead he becomes part of the flora and fauna himself, through sheer presence and patience. He keeps no website; he leaves the stage to nature.

Contact: via the Culture and Tourism Commission of Bech

---

## EXHIBITED PHOTOGRAPH : FOREST LIGHT









*Scan me!*

---

CULTURE AND TOURISM COMMISSION  
COMMUNE OF BECH

---

The travelling photographic exhibition  
'Müllerthal. Special Places of the Region'

2026

Contact

Culture and Tourism Commission of the commune of Bech  
gemeng@bech.lu  
www.bech.lu



Cofinancé par  
l'Union européenne



LE GOUVERNEMENT  
DU GRAND-DUCHÉ DE LUXEMBOURG  
Ministère de l'Agriculture,  
de l'Alimentation et de la Viticulture